

UNIFORMS^{SARL}

tailor-made to suit your business.

Bouchrieh, Assaily Street, St Bakhos Building-Beirut, Lebanon
Tel: +961 1 890 117 | Fax: +961 1 890118
E-mail: info@uniformslb.com | Website: www.uniformslb.com

With over 20 years of experience, **Uniforms** has evolved to become a reference in creating the perfect attire for service-oriented businesses. By establishing a close connection with their clients, **Uniforms'** team of designers and artisans make sure that every design is personalized according to the specific needs of each and every client, while paying close attention to details.

Uniforms' mission is to create outfits that convey the proper image of the company they represent. **Uniforms'** creations are not only elegant but also comfortable even if worn all day long. In addition to that, **Uniforms** offers competitive quality/price value.

Quality at its best

We choose durable all seasons fabrics, designed to ensure optimal comfort all year round, be it indoors or outdoors.

Using minimal polyester, the poly-wool's texture offers a sleek and soft touch and an elegant look. For employees who must work extensively out-of-doors, we have coordinating coats or rain coats to protect them from the weather and uphold the overall image of the establishment they belong to.

Our team of experts diligently works to make you look your best. We understand that the uniforms worn by service personnel reflect the quality of the establishment at which they work, which is why our uniforms are worn by the finest hotels staff in the country.

Eye catchy designs

Our creative designs combine style and elegance with practicality. Every outfit is designed to easily identify the position of the staff member wearing it, and personalized with an individual embroidered logo.

Uniforms customers encompass a wide range of businesses. From hospitality to medical care, banking and finance to transport and the list is endless.

For any consultation, please contact us at:

info@uniformslb.com



BUSINESS*wear* 7

- Ladies' Suit
- Men's Suit
- Ladies' Blouses
- Men's Shirts



SERVICE*wear* 39

- Ladies' Formal Vests
- Men's Formal Vests
- Suit Coats & Blazers
- Hostess Suits & Dresses



F&B & KITCHEN*wear* 61

- Waiters & Waitresses
- Kimonos
- Chef Coats & Cook Shirts



BEAUTY & HEALTH*wear* 93

- Medical Lab Coats
- Healthcare Tunics
- Spa/Salon Vests
- Beauty Tunics



WORK*wear* 111

- Work Shirts & Pants
- Coveralls & Overalls
- Jacket & Work Coats
- Rainwear
- Safety Hi Visibility Work Wear



HOUSE*keeping* 135

- Maid Uniforms
- Hotels Housekeeping



SCHOOL*wear* 147

- Jumpers
- Shirts



LIFESTYLE*wear* 159

- Active Wear
- Beach Wear
- Casual Wear
- Polos & T-shirts



ACCESSORIES 169



USEFUL*tips* 183

“Business is definitely not about fashion, it’s about style and we know it.”

BW 800

Female Blouse

V-neck with open collar
Front button closure
Cufflink on the sleeves
SIZES | 34 to 48
FABRIC | 66 / 29 / 5
satin / polyester / spandex



BW 200

Female Skirt

Straight cut, fully lined
SIZES | 34 to 48
FABRIC | 65 / 30 / 5
polyester / rayon / spandex



BW 801

Female Blouse

Short sleeves with button on the sleeves
SIZES | 34 to 48
FABRIC | 65 / 35
poly / cotton

BW 300

Female Trouser

Straight cut
SIZES | 34 to 48
FABRIC | 65 / 35
poly / viscose

BW 100

Female Jacket

Long jacket two button closure
SIZES | 34 to 48
FABRIC | 65 / 35
poly / viscose





BW 101

Female Jacket

Single breasted styling

Two buttons closure

SIZES | 34 to 48

FABRIC | 50 / 45 / 5

wool / polyester / spandex

BW201

Female Skirt

Straight cut

Knee level

SIZES | 34 to 48

FABRIC | 50 / 45 / 5

wool / polyester / spandex



BW 102

Female Jacket

Single breasted

One button closure

SIZES | 34 to 48

FABRIC | 100% polyester

BW 202

Female Skirt

Straight cut

Above the knee

SIZES | 34 to 48

FABRIC | 100% polyester

BW 103

Female Jacket

Single breasted
Three button closure
SIZES | 34 to 48
FABRIC | 100% polyester

BW 301

Female Trousers

Flat cut
Front styling / Belt loops
Pocket on both sides
SIZES | 34 to 48
FABRIC | 100% polyester





BW 104

Female Jacket

Short cut
SIZES | 34 to 48
FABRIC | 95 / 5
polyester / spandex

BW 802

Female Blouse

Classic cut
SIZES | 34 to 48
FABRIC | 95 / 5
cotton / lycra

BW 203

Female Skirt

Straight cut / front slit
SIZES | 34 to 48
FABRIC | 95 / 5
polyester / spandex

BW 1200

Female Tie

FABRIC | 100% polyester

BW 105

Female Jacket

Single breasted with two buttons

SIZES | 34 to 48

FABRIC | 65 / 30 / 5

polyester / wool / spandex



BW 803

Female Blouse

Classic collar
with open v-neck
& single cuffs

SIZES | 34 to 48

FABRIC | 65 / 35

poly / cotton

BW 302

Female Trouser

Medium waist, zipper fly, bootleg

SIZES | 34 to 48

FABRIC | 65 / 30 / 5

polyester / wool / spandex

BW 804

Female Blouse

Classic collar

Short sleeves

SIZES | 34 to 48

FABRIC | 65 / 35

poly / cotton



BW 1201

Female Scarf

FABRIC | 100% silk



BW 805

Female Blouse

Classic collar with open v-neck

Long sleeves

SIZES | 34 to 48

FABRIC | 65 / 35

poly / cotton

BW 204

Female Skirt

Straight cut, knee level, front slit

SIZES | 34 to 48

FABRIC | 65 / 35

poly / rayon



BW 106

Female Jacket

Double breasted closure

SIZES | 34 to 48

FABRIC | 65 / 35

poly / rayon

BW 205

Female Skirt

Straight cut, knee level

SIZES | 34 to 48

FABRIC | 65 / 35

poly / rayon

BW 107

Female Coat Jacket

One button closure

Knee level

SIZES | 34 to 48

FABRIC | 65 / 20 / 15

poly / rayon / wool



BW 108**Female Jacket**

Single breasted with three buttons closure

SIZES | 34 to 48

FABRIC | 65 / 35
poly / rayon

BW 206**Female Skirt**

Straight cut, slit on the back

SIZES | 34 to 48

FABRIC | 65 / 35
poly / rayon

BW 303**Female Trouser**

Medium cut, straight leg

SIZES | 34 to 48

FABRIC | 65 / 35
poly / rayon

BW 109

Female Jacket

V-neck, one button closure

SIZES | 34 to 48

FABRIC | 65 / 35

poly / wool

BW 110

Female Jacket

Mandarin collar, six buttons closure

SIZES | 34 to 48

FABRIC | 65 / 35

poly / wool



BW 111

Female Jacket

Two buttons closure

Flap on the pocket

SIZES | 34 to 48

FABRIC | 65 / 35

poly / viscose



BW 112

Female Jacket

Five buttons closure

SIZES | 34 to 48

FABRIC | 65 / 35

poly / wool





BW 304

Male Trousers

SIZES | 38 to 60

FABRIC | 65 / 35

poly / viscose



BW 113

Male Jacket

SIZES | 38 to 60

FABRIC | 65 / 35

poly / viscose

BW 400

Male Waistcoat

SIZES | 38 to 60

FABRIC | 65 / 35

poly / viscose



BW 500

Male Shirt

SIZES | S to 3XL

FABRIC | 65 / 35

poly / cotton

**BW 114****Male Jacket**

Single breasted with one button closure

SIZES | 38 to 60

FABRIC | 65 / 35

poly / rayon

BW 115**Male Jacket**

Single breasted with 2 buttons closure

SIZES | 38 to 60

FABRIC | 65 / 35

poly / rayon





BW 501

Male Jacket

Single breasted style
Notch collar
Three buttons closure
Two flap on the pockets
Back vent
Two inside pockets
SIZES | 38 to 60
FABRIC | 75 / 25
polyester / wool

BW 116

Male Shirt

Black shirt
SIZES | S to 3XL
FABRIC | 65 / 35
poly / cotton

BW 305

Male Trousers

Double pleat styling
Curtain waistband, belt loops
SIZES | 38 to 60
FABRIC | 75 / 25
polyester / wool

BW 806**Female Blouse**

Satin v-neck

SIZES | 34 to 48

FABRIC | 65 / 35

polyester / viscose

BW 117**Female Jacket**

Single breasted with two buttons closure

SIZES | 34 to 48

FABRIC | 65 / 35

polyester / rayon

BW 207**Female Skirt**

Straight cut, knee level

SIZES | 34 to 48

FABRIC | 65 / 35

poly / rayon



BW 117**Male Jacket**

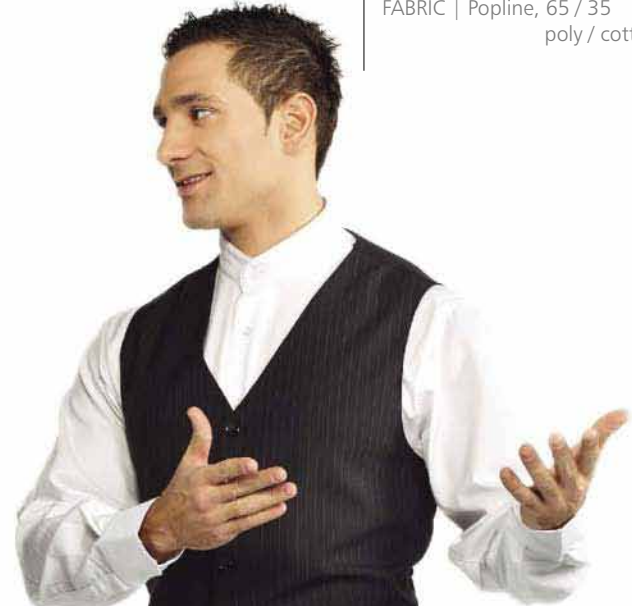
Single breasted with two buttons closure

SIZES | 38 to 60

FABRIC | 65 / 35
poly / rayon**BW 502****Male Shirt**

Mandarin collar

SIZES | S to 3XL

FABRIC | Popline, 65 / 35
poly / cotton**BW 400****Male Waistcoat**

Four buttons closure

Double pockets

Fully lined

SIZES | 38 to 60

FABRIC | 65 / 35
poly / rayon**BW 306****Male Trouser**

Single pleat, belt loops

Top pockets, reinforced

at joint of pantlegs

SIZES | 38 to 60

FABRIC | 65 / 35
poly / rayon**BW 306****Male Trouser**

Single pleat with side

& back pockets

SIZES | 38 to 60

FABRIC | 65 / 35
poly / rayon

BW 118**Female Jacket**

Single breasted, one button closure
 V-neck with side ties
 SIZES | 34 to 48
 FABRIC | 65 / 25 / 10
 poly / viscose / spandex

**BW 807****Female Blouse**

Classic collar
 V-neck and single cuffs
 SIZES | 34 to 48
 FABRIC | 65 / 35
 poly / viscose

**BW 207****Female Skirt**

Straight cut
 Knee level
 Center back pleat
 SIZES | 34 to 48
 FABRIC | 65 / 25 / 10
 poly / viscose / spandex



BW 808

Female Blouse

Classic collar, v-neck
SIZES | 34 to 48
FABRIC | 65 / 35
poly / cotton

BW 119

Female Jacket

Single breasted
Notch collar
SIZES | 34 to 48
FABRIC | 65 / 30 / 10
poly / viscose / lycra

BW 208

Female Skirt

Soft fabric, front, left side vent
Center back zipper with button closure
SIZES | 34 to 48
FABRIC | 65 / 35
poly / cotton

BW 809**Female Blouse**

V-neck, classic collar
Single cuffs
SIZES | 34 to 48
FABRIC | 65 / 35
poly / cotton

BW 401**Female Waistcoat**

Sleeveless blazer
Side-seam pockets
SIZES | 34 to 48
FABRIC | 100% polyester

BW 307**Female Trousers**

Flat-front styling
Zipper front
SIZES | 34 to 48
FABRIC | 100% polyester



BW 120

Male Jacket

Modern fit
Single breasted
Two lower pockets, two side pockets
Double back vent
SIZES | 38 to 60
FABRIC | 80 / 20
poly / rayon



BW 308

Male Trouser

Flat front styling
Belt loops, one at center back
SIZES | 38 to 60
FABRIC | 80 / 20
poly / rayon

BW 503

Male Shirt

Two regular buttons

Some with 2 cufflinks on the sleeves

SIZES | S to 3XL

FABRIC | 65 / 35

poly / cotton

BW 1202

Male Ties

FABRIC | 100% polyester



**BW 810****Female Blouse**

Contrast stand up collar

V-neck

Straight hem

SIZES | 34 to 48

FABRIC | 97 / 3

cotton / spandex

BW 811**Female Blouse**

V-neck with two cuffs on the sleeves

SIZES | 34 to 48

FABRIC | 65 / 35

poly / cotton

**BW 209****Female Skirt**

Slim fit cut

Buttons on the left side

SIZES | 34 to 48

FABRIC | 65 / 25 / 10

poly / cotton / spandex

BW 812**Female Blouse**

Mandarin collar

SIZES | 34 to 48

FABRIC | 65 / 35

poly / cotton

**BW 813****Female Blouse**

V-neck, 1cm pleats on the front

SIZES | 34 to 48

FABRIC | 65 / 35

poly / cotton

BW 309**Female Trouser**

Straight cut

Slim fit

SIZES | 34 to 48

FABRIC | 65 / 25 / 10

poly / cotton / spandex



BW 814

Female Blouse

V-neck with open collar

SIZES | 34 to 48

FABRIC | 66 / 29 / 5

cotton / polyester / lycra

**BW 815****Female Blouse**

V-neck, open collar

SIZES | 34 to 48

FABRIC | 65 / 20 / 15

poly / cotton / lycra

BW 1000**Female Dress**

Slim fit dress with suspenders

SIZES | 34 to 48

FABRIC | 65 / 20 / 5

poly / cotton / spandex



BW 816

Female Blouse

Mandarin collar

Pleated front with eight button closure

SIZES | 34 to 48

FABRIC | 65 / 25 / 10

poly / cotton / lycra



BW 820

Female Blouse

Stylish v-neck blouse

5 cuffs on the sleeves

SIZES | 34 to 48

FABRIC | 65 / 25 / 10

poly / cotton / lycra



BW 401

Female Waistcoat

Fixed buttons front closure
Fully lined
SIZES | 34 to 48
FABRIC | 55 / 45
poly / wool



BW 818

Female Blouse

V-neck open collar
SIZES | 34 to 48
FABRIC | 65 / 35
poly / cotton

BW 310

Female Trouser

Wide legs & lower to waist
SIZES | 34 to 48
FABRIC | 55 / 45
poly / wool

*“They say, you shouldn’t
notice the service,
it should just be perfect.”*

SW 402

Male Waistcoat

Fly front vest
High button closure
Double pockets, fully lined
SIZES | 38 to 60
FABRIC | 55 / 45
poly / wool



SW 1203

Self Bowtie

Fly front vest
FABRIC | 100% silk

SW 403

Male Waistcoat

Double breasted vest
Lower pockets with plain flaps
SIZES | 38 to 60
FABRIC | 55 / 45
poly / wool



SW 504

Male Shirt

Mandarin collar
with cuffs on the sleeves
SIZES | S to 3XL
FABRIC | 80 / 20
poly / cotton

SW 311

Male Trouser

Single pleat front
with side pockets
SIZES | 38 to 60
FABRIC | 65 / 35
poly / rayon



SW 404

Male Waistcoat

Single breasted styling
Round neckline & placket
Hidden buttons closure
Fully lined
SIZES | 38 to 60
FABRIC | 50 / 50
poly / satin

SW 505

Male Shirt

Piqué shirt
Spread collar
Adjustable cuffs
SIZES | S to 3XL
FABRIC | 62 / 38
poly / cotton

SW 312

Male Trouser

Single pleat front
Belt loops
Side pockets
SIZES | 38 to 60
FABRIC | 65 / 35
poly / rayon



SW 405

Male Waistcoat

Single breasted styling
Round neckline & placket
Hidden button closure
SIZES | 38 to 50
FABRIC | 50 / 50
poly / satin





SW 406

Male Waistcoat

Six buttons closure
Adjustable on the back
SIZES | 38 to 60
FABRIC | 65 / 35
poly / viscose

SW 313

Male Trousers

Belt loops
Two back pockets
SIZES | 38 to 60
FABRIC | 65 / 35
poly / viscose

SW 407

Male Waistcoat

Single breasted styling
Round neckline & placket
Hidden buttons closure
Fully lined
SIZES | 38 to 60
FABRIC | 50 / 50
poly / satin



SW 121

Male Jacket

Double breasted closure
 Six buttons closure
 Contrasting collar & cuff trim
 SIZES | 38 to 60
 FABRIC | 65 / 35
 poly / rayon



SW 122

Male Jacket

Mandarin collar
 Six buttons closure
 Trim on the cuffs
 SIZES | 38 to 60
 FABRIC | 65 / 35
 poly / rayon



SW 314

Male Trouser

Single pleated front
 with side bands & side pockets
 SIZES | 38 to 60
 FABRIC | 65 / 35
 poly / rayon

SW 123

Male Jacket

Double breasted with gold buttons

Trim on sleeves

SIZES | 38 to 60

FABRIC | 65 / 35

poly / viscose



SW 315

Male Trouser

Straight cut

Single pleated front

SIZES | 38 to 60

FABRIC | 65 / 35

poly / viscose



SW 819

Female Blouse

V-neck
Classic collar
SIZES | 34 to 48
FABRIC | 65 / 35
poly / cotton

SW 408

Female Waistcoat

Five buttons closure
Front seal fabric
Lower pockets
SIZES | 34 to 48
FABRIC | 75 / 25
poly / wool

SW 210

Female Skirt

Slim fit
Knee level
Side vent for easy movement
SIZES | 34 to 48
FABRIC | 75 / 25
poly / wool

SW 409

Female Waistcoat

Classic four buttons
with lining back
SIZES | 34 to 48
FABRIC | 65 / 35
poly / rayon



SW 124

Female Jacket

Two buttons closure
Two flap pockets
SIZES | 34 to 48
FABRIC | 65 / 35
poly / wool



SW 210

Female Skirt

Striped skirt
Bias cut with hook & eye closure
Punto-sewing
SIZES | 34 to 48
FABRIC | 65 / 35
poly / wool

SW 125

Female Jacket

Broderie & silk jacket
Wedding style
One button closure
SIZES | 34 to 48
FABRIC | 100% Silk



SW 211

Female Skirt

Long skirt, bias cut
SIZES | 34 to 48
FABRIC | 100% Satin



SW 1001

Female Dress

Satin upper part

Lower part 100% wool

SIZES | 34 to 48

SW 126**Female Jacket**

Chinese collar
with two flap pockets
Five buttons
Design on the collar & sleeves
SIZES | 34 to 48
FABRIC | 65 / 35
poly / viscose

**SW 212****Female Skirt**

Stylish cut
Knee level
SIZES | 34 to 48
FABRIC | 65 / 35
poly / viscose

SW 127

Male Tailcoat

Classic with satin collar
SIZES | 48 to 60
FABRIC | 65 / 35
poly / wool

SW 506

Male Shirt

Eaton collar
with concealed buttons
SIZES | S to 3XL
FABRIC | 65 / 35
poly / cotton

SW 316

Male Trousers

Flat front with side
& back pockets
SIZES | 48 to 60
FABRIC | 100% polyester

SW 820

Female Blouse

V-neck, classic collar
SIZES | 34 to 48
FABRIC | 100% cotton

SW 128

Female Jacket

Notch collar
SIZES | 34 to 48
FABRIC | 65 / 35
poly / wool

SW 213

Female Skirt

Knee level
SIZES | 34 to 48
FABRIC | 65 / 35
poly / wool





SW 1002

Female Dress

Sleeveless dress

Slim fit

Knee level

SIZES | 34 to 48

FABRIC | 80 / 20

cotton / lycra

SW 129

Female Jacket

Long jacket
Two button closure
Two flap pockets
SIZES | 34 to 48
FABRIC | 65 / 35
poly / viscose

SW 214

Female Skirt

Straight cut
Knee level
SIZES | 34 to 48
FABRIC | 65 / 35
poly / viscose



SW 130

Female Jacket

Short sleeves
Striped jacket
Belt on the waist
SIZES | 34 to 48
FABRIC | 65 / 35
poly / viscose



SW 215

Female Skirt

Slim fit
Straight cut
SIZES | 34 to 48
FABRIC | 65 / 35
poly / rayon

SW 131

Female Jacket

Two buttons closure

Two flaps

SIZES | 34 to 48

FABRIC | 65 / 30 / 5

poly / wool / spandex





SW 821

Female Blouse

V-neck

Classic collar

SIZES | 34 to 48

FABRIC | 63 / 34 / 3

cotton / polyamide / elasthan

SW 216

Female Skirt

Knee level

SIZES | 34 to 48

FABRIC | 65 / 35

poly / wool



SW 132

Female Jacket

One button closure
Trim on the collar
SIZES | 34 to 48
FABRIC | 65 / 35
poly / rayon

SW 822

Female Blouse

Striped blouse
V-neck
SIZES | 34 to 48
FABRIC | 80 / 20
cotton / lycra

SW 217

Female Skirt

Straight cut
Knee level
SIZES | 34 to 48
FABRIC | 65 / 35
poly / rayon



SW 1003

Female Dress

Sleeveless dress
with satin belt

SIZES | 34 to 48

FABRIC | 75 / 20 / 5

polyester / wool / lycra

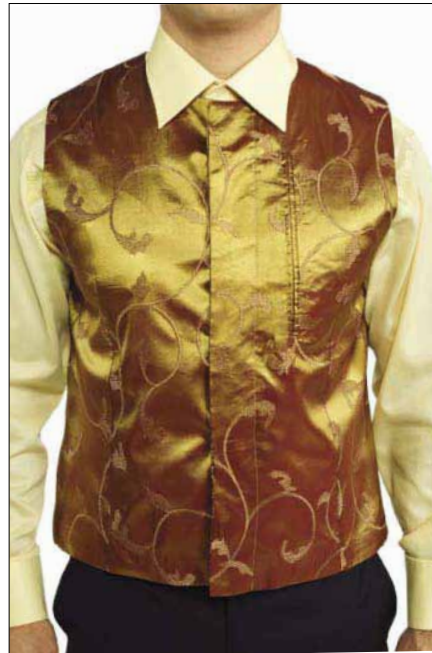
SW 823



SW 133



SW 410



SW 411

“The toque, the apron, the clog are what makes a chef ready to start his mission. And there is much more.”

FBKW 411

Male Waistcoat

Oriental trim on the chest
with no button

Fully lined

SIZES | 48 to 60

FABRIC | 65 / 35

poly / rayon

FBKW 507

Male Shirt

V-neck, with concealed buttons

SIZES | S to 3XL

FABRIC | 65 / 35

poly / cotton



FBKW 412

Male Waistcoat

Four buttons

Shawl collar

Trims on the front, chest and pockets

SIZES | 48 to 60

FABRIC | 65 / 35

poly / rayon



FBKW 218

Male Trouser

Straight cut

Flat on the front side

SIZES | 48 to 60

FABRIC | 65 / 35

poly / rayon

FBKW 508

Male Shirt

V-neck

SIZES | S to 3XL

FABRIC | 65 / 35

poly / cotton

FBKW 317

Male Trouser

Flat front with side pockets

SIZES | 48 to 60

FABRIC | 65 / 35

poly / rayon

63

F&B & KITCHENwear

FBKW 600

Male Polo

SIZES | S to 3XL

FABRIC | shirt: Piqué, 50 / 50
poly / cotton

collar: Poplin, 50 / 50



FBKW 1204

Apron

With two pockets

SIZES | All sizes

FABRIC | 65 / 35
poly / cotton

FBKW 318

Male Trouser

Jeans cut with trim on the knee
and the back

SIZES | 48 to 60

FABRIC | 65 / 35
poly / cotton

FBKW 601

Male Polo

Slim fit cut

SIZES | S to 3XL

FABRIC | Piqué, 50 / 50
poly / cotton



FBKW 1205

Apron

Long apron with punto sewing

SIZES | All sizes

FABRIC | 65 / 35
poly / cotton

FBKW 509

Male Shirt

V-neck, design on the arms

SIZES | S to 3XL

FABRIC | 80 / 20
poly / cotton



FBKW 1206

Apron

One side pocket with belt on the waist

Punto sewing

SIZES | All sizes

FABRIC | 65 / 35
poly / cotton



FBKW 319

Male Trouser

Jeans cut

Loop on the waist

SIZES | 48 to 60

FABRIC | 65 / 35
poly / cotton

FBKW 602

Male Polo

Long sleeve polo, v-neck
SIZES | S to 3XL
FABRIC | Piqué, 100% cotton

FBKW 1207

Apron

Knee level apron
with one pocket on the side
SIZES | All sizes
FABRIC | 65 / 35
poly / cotton



FBKW 824

Female Blouse

Short sleeves
V-neck
SIZES | 34 to 48
FABRIC | 100% cotton

FBKW 1206

Apron

Three colors
Long pockets on the side with a belt
SIZES | All sizes
FABRIC | 65 / 35
poly / cotton





FBKW 510

Male Shirt

Piqué shirt
Filet pocket on the side
SIZES | S to 3XL
FABRIC | 65 / 35
poly / cotton

FBKW 1209

Apron

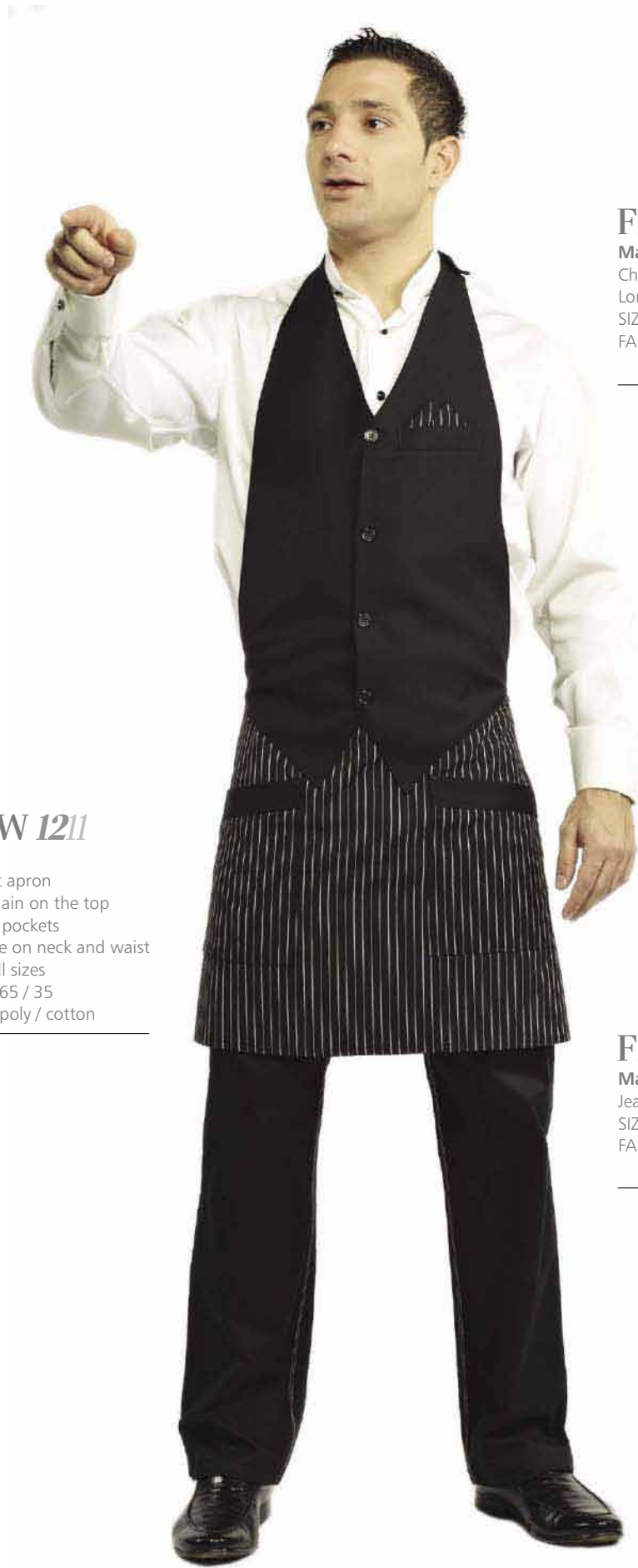
Waist apron
Three colors with 3D embroidery
SIZES | All sizes
FABRIC | 65 / 35
poly / cotton



FBKW 1210

Apron

Barista apron
Adjustable on the neck
with 3D embroidery
SIZES | All sizes
FABRIC | 65 / 35
poly / cotton



FBKW 1211

Apron

Waistcoat apron
V-neck, plain on the top
Designed pockets
Adjustable on neck and waist
SIZES | All sizes
FABRIC | 65 / 35
poly / cotton

FBKW 511

Male Shirt

Chinese collar
Long sleeves
SIZES | S to 3XL
FABRIC | 65 / 35
poly / cotton

FBKW 320

Male Trouser

Jeans cut
SIZES | 48 to 60
FABRIC | 65 / 35
poly / cotton



FBKW 512

Male Shirt

Two colors, V-neck
Adjustable cuffs
SIZES | S to 3XL
FABRIC | 65 / 35
poly / cotton

FBKW 1212

Apron

One side pocket apron
SIZES | All sizes
FABRIC | 65 / 35
poly / cotton

FBKW 321

Male Trouser

Jeans cut
Trim on two sides
SIZES | 48 to 60
FABRIC | 65 / 35
poly / cotton



FBKW 513

Male Shirt

Chinese collar

Design on the chest

Slim cut

Hidden buttons

SIZES | S to 3XL

FABRIC | 85 / 20

poly / cotton

FBKW 322

Male Trouser

Design on the two sides
and on the pockets

SIZES | 48 to 60

FABRIC | 65 / 35

poly / cotton



FBKW 413

Male Waistcoat

Tartan waistcoat
Plain design on the back
SIZES | 48 to 60
FABRIC | 65 / 35
poly / viscose



FBKW 414

Female Waistcoat

Four buttons with striped pockets

SIZES | 34 to 48

FABRIC | 65 / 35

poly / viscose

FBKW 825

Female Blouse

Bow tie

Design on the collar

SIZES | 34 to 48

FABRIC | 65 / 35

poly / cotton

FBKW 219

Female Skirt

Straight cut

Knee level

SIZES | 34 to 48

FABRIC | 65 / 35

poly / viscose



FBKW 415

Female Jacket

Sleeveless jacket

Notch collar

SIZES | 34 to 48

FABRIC | 65 / 35

poly / viscose

FBKW 826

Female Blouse

V-neck

Three buttons on the cuffs

SIZES | 34 to 48

FABRIC | 80 / 20

cotton / lycra

FBKW 323

Female Trouser

Medium cut

Straight leg

SIZES | 34 to 48

FABRIC | 65 / 35

poly / viscose



75

F&B & KITCHENwear



FBKW 514

Male Shirt

poplin fabric on the back

SIZES | S to 3XL

FABRIC | 65 / 35

poly / cotton

Single fabric stripes on chest

FABRIC | 50 / 50

poly / cotton

FBKW 1213

Apron

Double side apron

Trim on the border

SIZES | All sizes

FABRIC | 65 / 35

poly / cotton

**FBKW 515****Male Shirt**

Popline fabric on the front

SIZES | S to 3XL

FABRIC | 65 / 35

poly / cotton

Single fabric stripes on the back

FABRIC | 50 / 50

poly / cotton

FBKW 324**Male Trouser**

Jeans cut

SIZES | 48 to 60

FABRIC | 65 / 35

poly / cotton



FBKW 516

Male Shirt

V-neck

Five buttons on the cuffs

Trim on the chest

SIZES | S to 3XL

FABRIC | 65 / 35

poly / cotton

FBKW 517

Male Shirt

Japanese design on the chest
Plain sleeves and back slim cut
SIZES | S to 3XL
FABRIC | 65 / 35
poly / cotton



FBKW 416

Male Waistcoat
Italian v-neck
Plain on the back
SIZES | 48 to 60
FABRIC | 65 / 35
poly / cotton

**FBKW 603**

Male T-shirt
Round neck
SIZES | S to 3XL
FABRIC | 100% cotton

FBKW 325

Male Trouser
Linen pants
Elastic on the waist
SIZES | S to 3XL
FABRIC | 100% cotton



FBKW 326

Male Trouser

Pocket with flaps
on the two sides

SIZES | 48 to 60

FABRIC | 65 / 35

poly / cotton

FBKW 518

Male Shirt

V-neck

One side pocket

SIZES | S to 3XL

FABRIC | 65 / 35

poly / cotton

FBKW 1214

Apron

Knee level

SIZES | All sizes

FABRIC | 65 / 35

poly / cotton





FBKW 1214

Male Bandana
100% cotton

FBKW 700

Male Kimono
Japanese design
SIZES | All sizes
FABRIC | 65 / 35
poly / cotton

FBKW 701

Female Kimono
Japanese design
Knee level
SIZES | All sizes
FABRIC | 65 / 35
poly / cotton





FBKW 702

Female Kimono

Two colors
Easy to fit
Available in all colors
SIZES | All sizes
FABRIC | 65 / 35
poly / cotton

FBKW 327

Female Trouser

Medium cut
Bootleg
SIZES | All sizes
FABRIC | 65 / 35
poly / cotton



FBKW 1215

Chef Hat

SIZES | S to 4XL

FABRIC | 65 / 35

poly / cotton

FBKW 703

Chef Jacket

Press buttons

Aeration holes under arms

SIZES | S to 4XL

FABRIC | Twill, 100% cotton



FBKW 328

Male Trousers

Elastic on the waist

SIZES | S to 4XL

FABRIC | Twill, 65 / 35

poly / cotton

FBKW 1216

Chef Hat

SIZES | S to 4XL

FABRIC | 65 / 35

poly / cotton

FBKW 704

Chef Jacket

Press buttons

Aeration holes under arms

SIZES | S to 4XL

FABRIC | 40 / 60

Twill, poly / cotton



FBKW 329

Male Trouser

Striped pant

Elastic on the waist

SIZES | S to 4XL

FABRIC | 40 / 60

poly / cotton

85

F&B & KITCHENwear



FBKW 330

Chef Trousers
Adjustable smart fit waist
SIZES | S to 4XL
FABRIC | 40 / 60
poly / cotton

FBKW 705

Chef Jacket
Trim on the pocket and cuffs
Adjustable buttons
SIZES | S to 4XL
FABRIC | 40 / 60
poly / cotton





FBKW 706

Chef Coat

Double breasted
Removable buttons
SIZES | S to 4XL
FABRIC | 65 / 35
Twill, poly / cotton

FBKW 331

Chef Trousers

Hounds tooth, tartan
Elastized waist with a zipper
SIZES | S to 4XL
FABRIC | 65 / 35
Twill, poly / cotton





FBKW 707

Chef Coats

Different colors
 Different collar design
 SIZES | S to 4XL
 FABRIC | 65 / 35
 poly / cotton

FBKW 1217

Chef Hat

SIZES | One size
 FABRIC | 65 / 35
 poly / cotton



FBKW 708

Chef Coats

Big buttons with trim
 Aeration holes under arms
 SIZES | S to 4XL
 FABRIC | 65 / 35
 poly / cotton

FBKW 709

Chef Coat

Double breasted
Removable buttons
SIZES | S to 4XL
FABRIC | 100% cotton

FBKW 710

Chef Coat

Classic cut
Removable buttons
SIZES | S to 4XL
FABRIC | 40 / 60
poly / cotton



FBKW 711

Chef Coat

Double breasted
Removable buttons
Special design on the collar
SIZES | S to 4XL
FABRIC | 65 / 25
poly / cotton



FBKW 332

Chef Trouser

Striped trouser
SIZES | S to 4XL
FABRIC | 65 / 35
poly / viscose

FBKW 1218

Chef Hat
SIZES | All sizes
FABRIC | 100% cotton

FBKW 712

Ladies Chef Coat
Classic cross cut
Fabric buttons
SIZES | S to 4XL
FABRIC | 65 / 25
poly / cotton





FBKW 713

Chef Coat

Designed cuffs, collar and buttons

SIZES | S to 4XL

FABRIC | 65 / 35

poly / cotton

FBKW 333

Chef Trouser

Elasticized waist

Aeration holes between legs

SIZES | S to 4XL

FABRIC | 65 / 35

poly / cotton

*“Being a beauty and
healthcare expert implies.”*

BHW 1300

Female Tunic

Jersey slim cut
Mandarin collar
Keyhole detail
Belt on the waist
SIZES | XS to 3XL
FABRIC | 50 / 50
poly / cotton

BHW 334

Female Trouser

Medium comfortable cut
with elastic waist
SIZES | XS to 3XL
FABRIC | 50 / 50
poly / cotton



BHW 1301

Female Tunic

Mandarin collar
Buttons closure on the left
with hidden buttons

SIZES | XS to 3XL

FABRIC | 65 / 25 / 10
poly / viscose / spandex



BHW 1302

Female Tunic

Mandarin collar
Cross cut buttons

SIZES | XS to 3XL

FABRIC | 65 / 25 / 10
poly / viscose / spandex



BHW 335

Female Trouser

Straight cut
Adjustable on the waist

SIZES | XS to 3XL

FABRIC | 65 / 25 / 10
poly / viscose / spandex

BHW 336

Female Trouser

Medium cut
Side zip

SIZES | XS to 3XL

FABRIC | 65 / 35
poly / cotton

BHW 1303

Female Tunic

Soft stretch fabric

Centered zipper

SIZES | XS to 3XL

FABRIC | 65 / 25 / 10

poly / cotton / spandex



BHW 1304

Male Tunic
Mandarin collar
Front zipper
SIZES | S to 3XL
FABRIC | 65 / 35
poly / cotton

BHW 337

Male Trousers
Two sides pockets
Elastic on the waist
SIZES | S to 3XL
FABRIC | 65 / 35
poly / cotton

BHW 1305

Female Tunic
Wrap scrub on the left side
SIZES | XS to 3XL
FABRIC | 65 / 35
poly / cotton





BHW 1306

Female Tunic
V-neck
Six buttons closure
SIZES | XS to 3XL
FABRIC | 65 / 35
Piqué, poly / cotton



BHW 1307

Female Tunic
Single breasted
Patch pocket
SIZES | XS to 3XL
FABRIC | 75 / 25
poly / cotton

BHW 338

Female Trouser
Flat front with a back elastic waist
Straight leg
SIZES | XS to 4XL
FABRIC | 75 / 25
poly / cotton

BHW 1308

Male Tunic

V-neck collar
Two patch pockets
SIZES | S to 3XL
FABRIC | 65 / 35
poly / cotton



BHW 339

Male Trousers

Elastic on the waist
SIZES | S to 3XL
FABRIC | 65 / 35
poly / cotton

BHW 1309

Female Tunic

Single breasted
Two patch pockets
Side vents
SIZES | XS to 3XL
FABRIC | 65 / 35
poly / cotton

BHW 340

Female Trouser

Elastic on the back
SIZES | XS to 3XL
FABRIC | 65 / 35
poly / cotton



BHW 1310

Male Tunic

Full cut
For easy movement
Trim on the sides
SIZES | S to 3XL
FABRIC | 65 / 35
poly / cotton

BHW 1311



BHW 341

Male Trousers

Straight cut
Elastic on the waist
Pocket on the back
SIZES | S to 3XL
FABRIC | 65 / 35
poly / cotton

BHW 1312

Male Tunic

Full cut

For easy movement

Trim on the sides

SIZES | S to 3XL

FABRIC | 65 / 35
poly / cotton



BHW 1313

Female Tunic

V-neck collar

Press buttons on the left side

Three patch pockets

Vent sides

SIZES | XS to 3XL

FABRIC | 65 / 35
poly / cotton

BHW 341

Female Trouser

Elastic waist

SIZES | XS to 3XL

FABRIC | 65 / 35
poly / cotton



BHW 1314

Male Tunic

V-neck collar
Three patch pockets
Vent sides
SIZES | S to 3XL
FABRIC | 65 / 35
poly / cotton

BHW 1315

Female Tunic

Notch collar
Single breasted
SIZES | XS to 3XL
FABRIC | 65 / 35
poly / cotton





BHW 1316

Doctor Tunic

Full cut jacket

SIZES | S to 3XL

FABRIC | 100% cotton

**BHW 1317****Female Tunic**

V-neck

Short sleeves

SIZES | XS to 3XL

FABRIC | 65 / 35

poly / cotton



BHW 1318
Female Tunic
V-neck
Short sleeves
SIZES | XS to 3XL
FABRIC | 65 / 35
poly / cotton



BHW 1319

Female Tunic

V-neck

Side pockets

SIZES | XS to 3XL

FABRIC | 100% cotton

BHW 1320

Female Tunic

V-neck

Long sleeves

Knee level

SIZES | XS to 3XL

FABRIC | 100% cotton





BHW 1321

Female Tunic

V-neck line

Cross cut

Vent sides

SIZES | XS to 3XL

FABRIC | 65 / 35

poly / cotton



*“Even for the toughest jobs,
there is an outfit that, based
on its design or material,
would help any worker
perform better.”*



WW 604

Male Polo

Classic cut polo with underarms detail

Contrasting collar with two buttons

Double needle stitching for durability

SIZES | S to 3XL

FABRIC | 50 / 50

poly / cotton



113

WORKwear

WW 342

Male Trouser

Cargo pants

Two patched flapped pockets on the sides

Belt loops

SIZES | 48 to 60

FABRIC | 65 / 35

poly / cotton





WW 900

Male Jacket

Welder jacket with press buttons

Lighter sleeve, chest & back

Heavy fabric

SIZES | S to 3XL

FABRIC | 100% cotton

WW 343

Male Trouser

Cargo pants

Two patched flapped pockets on side

Belt loops

SIZES | 48 to 60

FABRIC | 65 / 35

poly / cotton



WW 417

Male Waistcoat

Cargo vest
with four flap pockets

SIZES | S to 3XL

FABRIC | 65 / 35

twill, poly / cotton



WW 1100

Male Overall

Classic cut with elasticated waist

Front two way zipper

SIZES | S to 3XL

FABRIC | 65 / 35

twill, poly / cotton



WW 1101

Male Overall

Two way zipper

Two pockets

SIZES | S to 3XL

FABRIC | 65 / 35
poly / cotton

117

WORKwear

WW 1102

Male Overall
Overall with buckles
Zipper front pocket
SIZES | S to 3XL
FABRIC | 50 / 50
poly / cotton



WW 1103

Male Overall
Single fabric
Crew collar
SIZES | S to 3XL
FABRIC | 50 / 50
poly / cotton





WW 1104

Male Overall

Overall with buckles
Two sides pockets
SIZES | S to 3XL
FABRIC | 50 / 50
poly / cotton

119

WORKwear

WORKwear

120



WW 1105

WW 1106



121

WORKwear

WW 1107



WW 1321

Engineer Tunic

Free cut

Side & upper pockets

SIZES | S to 3XL

FABRIC | 65 / 35
poly / cotton



WW 901

Female Raincoat

Water proof PVC coat
SIZES | S to 3XL
FABRIC | 100% polyester

WW 344

Female Trouser

Water proof PVC trouser
SIZES | S to 3XL
FABRIC | 100% polyester

WW 1108

Male Overall

Zipper front
Two sides pockets
SIZES | S to 3XL
FABRIC | 65 / 35
poly / cotton





WW 1109

WORKwear 124



WW 1110

Male Overall

Zipper on the chest

Two pockets on the chest

Two pockets on the sides

SIZES | 48 to 60

FABRIC | 65 / 35

poly / cotton



WW 827

Female Blouse

Stretch lycra top

Long sleeves

Round neck

SIZES | XS to 3XL

FABRIC | 65 / 25 / 10

poly / cotton / lycra

WW 345

Female Trouser

Jeans pants

SIZES | 34 to 48

FABRIC | 65 / 35

poly / cotton

WW 519

Male Shirt

Press buttons closure, front & pockets

SIZES | S to 3XL

FABRIC | 80 / 20

poly / cotton

WW 346

Male Trouser

Straight cut with two pleads

Two pockets on sides

One pocket on the back

SIZES | 48 to 60

FABRIC | 65 / 35

poly / cotton



WW 1111

Male Overall

Concealed zipper

Two pockets on the chest

Two pockets on the sides

SIZES | S to 3XL

FABRIC | 65 / 35

poly / cotton



128

WORKwear

WW 134

Male Jacket

Welder jacket

Two colors

Double lights on the chest, sleeve & back

SIZES | S to 3XL

FABRIC | 70 / 30
poly / nylon



WW 112

Male Overall

Two colors with double lights on lower parts

SIZES | S to 3XL

FABRIC | 70 / 30
poly / nylon

WW 113

Male Overall

Overall with buckles
SIZES | S to 3XL
FABRIC | 65 / 35
poly / cotton

WW 605

Male T-shirt

Round neck
Short sleeves
SIZES | S to 3XL
FABRIC | 100% cotton



WW 135

Male Jacket

SIZES | S to 3XL
100% PVC jacket

WW 347

Male Trouser

Jeans with two pockets on the side
& two on the back
SIZES | 48 to 60
FABRIC | 65 / 35
poly / wool

WW 902

Male Raincoat

Straight cut
Two pockets on the front
Micro fleece lining
SIZES | S to 3XL
FABRIC | 70 / 30
nylon



WW 903

Male Raincoat

Raincoat with epaulette
Hidden zipper on the front
Detachable wool
SIZES | S to 3XL
FABRIC | 100% polyester





WW 418

PVC Waistcoats

PVC vest with lighter

SIZES | S to 3XL

FABRIC | 100% polyester

WW 419

Male Waistcoat

Cargo vest with four flap pockets

SIZES | S to 3XL

FABRIC | 65 / 35

poly / cotton



WW 420

Male Waistcoat

Cargo vest with press buttons & six front pockets

SIZES | S to 3XL

FABRIC | 65 / 35

poly / cotton



WW 421

Male Waistcoat

Cargo vest with five pockets

SIZES | S to 3XL

FABRIC | 65 / 35

poly / cotton

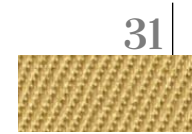
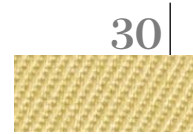
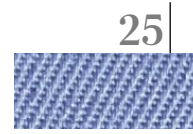
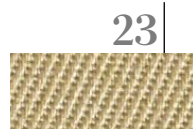
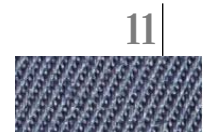
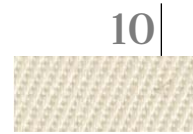
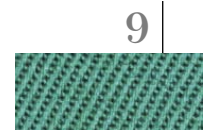
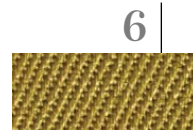
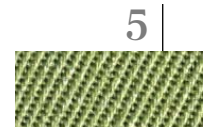
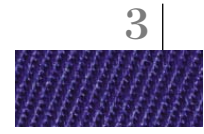
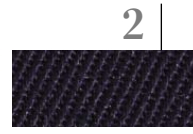
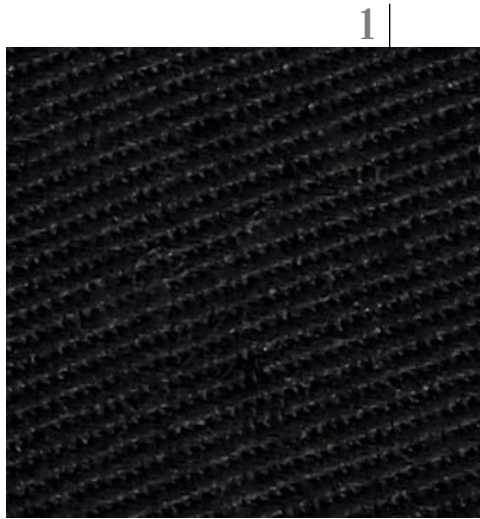
WW 422

Male Waistcoat

Front zipper with two pockets

SIZES | S to 3XL

FABRIC | polyester PVC



“We all love to see them in hospitality places, hotels, resorts... we even love to see them in our houses.”



H 1322

Female Tunic

Hidden buttons pocket
Princesse seams
SIZES | XS to 3XL
FABRIC | 100% polyester

H 1219

Apron

with plated edges
SIZES | One size
FABRIC | 100% polyester

H 348

Female Trouser

Elasticated waist
SIZES | XS to 3XL
FABRIC | 100% polyester



H 1323

Female Tunic

V-neck

Trim on the collar & sleeves

SIZES | XS to 3XL

FABRIC | 65 / 35
poly / viscose

H 1220

Apron

V-shaped striped

SIZES | One size

FABRIC | 75 / 35
poly / cotton

H 1324

Female Tunic

Round laced collar
with 1/3 sleeves
SIZES | XS to 3XL
FABRIC | 65 / 35
poly / cotton



H 1221

Apron

Round shape
with edge broderie
SIZES | One size
FABRIC | 75 / 35
poly / cotton

H 1222

Apron

Pleated front
Criss cross back
Waist tie
SIZES | One size
FABRIC | 65 / 30
poly / cotton





H 1325

Female Tunic

Single breasted

Trim on the collar & sleeves

Two pockets

SIZES | XS to 3XL

FABRIC | 65 / 35

poly / cotton

H 1223

Apron

Laced borders

SIZES | One size

FABRIC | 65 / 35

poly / cotton

H 350

Female Trousers

Elastic on the waist

SIZES | XS to 3XL

FABRIC | 65 / 35

poly / cotton

H 1224

Apron

Tarten long apron

SIZES | One size

FABRIC | 65 / 35
poly / viscose





H 1326

Female Tunic

Notch collar
Single breasted
Belt on the waist
SIZES | XS to 3XL
FABRIC | 65 / 35
poly / cotton

H 1327

Female Tunic

Mandarin collar

Two patched pockets

Trim on the sleeve & pockets

SIZES | XS to 3XL

FABRIC | 65 / 35

poly / viscose

H 351

Female Trouser

Elasticated waist

SIZES | XS to 3XL

FABRIC | 65 / 35

poly / cotton



H 1328

Male Tunic

Mandarin collar
Two patched pockets
Trim on the sleeves & pockets
SIZES | S to 3XL
FABRIC | 65 / 35
poly / viscose



H 352

Male Trousers

Elasticated waist
SIZES | S to 3XL
FABRIC | 65 / 35
poly / cotton

H 1329

Male Tunic

Mandarin collar
Hidden buttons
Trim on the chest,
pockets & sleeves
SIZES | S to 3XL
FABRIC | 65 / 35
poly / viscose

H 353

Male Trouser

Elasticated waist
SIZES | S to 3XL
FABRIC | 65 / 35
poly / cotton



145

HOUSEkeeping



H 1330

Female Tunic

Round collar
Zipper closure
Design underarms
SIZES | XS to 3XL
FABRIC | 65 / 35
poly / viscose

H 354

Female Trouser

Elasticated waist
SIZES | XS to 3XL
FABRIC | 65 / 35
poly / cotton

*“It’s beautiful to see kids
filing into school entrance.
The way they line up like
a flock of birds in one
uniform.”*

SCW 828

School Blouse

V-neck
Long sleeves
Age | 3 to 14 years
FABRIC | 65 / 35
poly / cotton

SCW 1225

Tie

FABRIC | 100% polyester

SCW 1004

School Dress

Age | 3 to 14 years
FABRIC | 65 / 35
poly / cotton



SCW 1005

School Dress

Striped dress
White collar
Age | 3 to 14 years
FABRIC | 65 / 35
poly / cotton



SCW 829

School blouse

V-neck
Long sleeves
Age | 3 to 14 years
FABRIC | 65 / 35
poly / cotton



SCW 421

School Waistcoat

V-neck vest
Age | 3 to 14 years
FABRIC | 50 / 50
acrylic / wool

SCW 520

School Shirt

V-neck
Checked shirt
Long sleeves
Age | 3 to 14 years
FABRIC | 50 / 50
poly / wool



SCW 220

School Skirt

A-line skirt
Elastic waist
Age | 3 to 14 years
FABRIC | 50 / 50
poly / rayon

150

SCHOOLwear

SCW 422

School Waistcoat

Three buttons closure
Age | 3 to 14 years
FABRIC | 65 / 35
poly / viscose

SCW 221

School Skirt

Pleated skirt
Elastic waist
Age | 3 to 14 years
FABRIC | 65 / 35
poly / viscose





SCW 423

School Waistcoat

V-neck

Three buttons closure with pockets

Age | 3 to 14 years

FABRIC | 65 / 35

poly / viscose

SCW 222

School Skirt

Pleated skirt

Elastic waist

Age | 3 to 14 years

FABRIC | 65 / 35

poly / viscose

SCW 830

School Blouse

V-neck pullover

Age | 3 to 14 years

FABRIC | 50 / 50

acrylic / wool

SCW 223

School Skirt

Elastic waist

Knee level

Age | 3 to 14 years

FABRIC | 50 / 50

poly / viscose





SCW 1006

School Dress

Checked dress with three buttons

Half closure

White on the sleeves

Age | 3 to 14 years

FABRIC | 65 / 35

poly / viscose

SCW 136

School Jacket

Single breasted
Notch collar
Age | 3 to 14 years
FABRIC | 75 / 25
poly / wool

SCW 224

School Skirt

Pleated skirt
Ribbon design on waist
Age | 3 to 14 years
FABRIC | 75 / 25
poly / wool



155

SCHOOLwear

SCW 831



SCW 225



SCW 904

SCW 606

School T-shirt

Round collar

Age | 3 to 14 years

FABRIC | 50 / 50

cotton / polyester

SCW 356

School Trouser

Loose pant

Two pockets

Age | 3 to 14 years

FABRIC | 65 / 35

poly / cotton





SCW 607

School T-shirt

Round neck
Short sleeves
Age | 3 to 14 years
FABRIC | 65 / 35
poly / cotton

SCW 357

School Trouser

Jogging pants
Trim on both sides
Age | 3 to 14 years
FABRIC | 50 / 50
poly / cotton

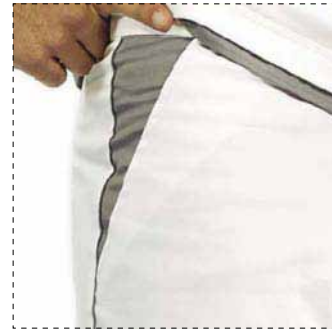
*For motion, for freedom, for
practicality... for life and for
style in one go.*



LW 608

Male Polo

Jersey fabric polo
Collar & waist trim
SIZES | S to 3XL
FABRIC | 50 / 50
poly / cotton



LW 358

Male Trouser

Two sides pockets
Trim on both sides
SIZES | S to 3XL
FABRIC | 50 / 50
poly / cotton



LW 905
Male Raincoat



LW 521
Male Shirt

LW 609
Male Polo

LW 832

Female Blouse

Jersey fabric
Short sleeves
SIZES | XS to 3XL
FABRIC | 50 / 50
poly / cotton

LW 359

Female Trouser

Elasticated waist
SIZES | XS to 3XL
FABRIC | 50 / 50
poly / cotton



LW 610

Female Polo

Neck & shoulders taping
helps to maintain shape
Double needle stitching
SIZES | XS to 3XL
FABRIC | 60 / 40
poly / cotton



165

LIFESTYLEwear

LW 833**Female Blouse**

Pockets design
on the left shoulder

SIZES | XS to 3XL

FABRIC | 65 / 35
poly / cotton

**LW 360****Female Trouser**

Slim fit

Pocket design

SIZES | 34 to 48

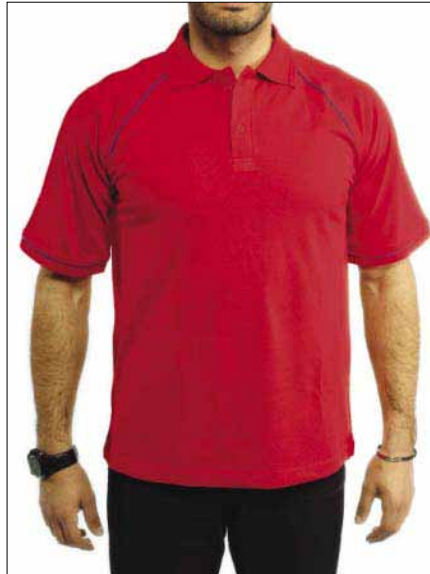
FABRIC | 65 / 35
poly / cotton

Male Polo

LW 611



LW 612



LW 613



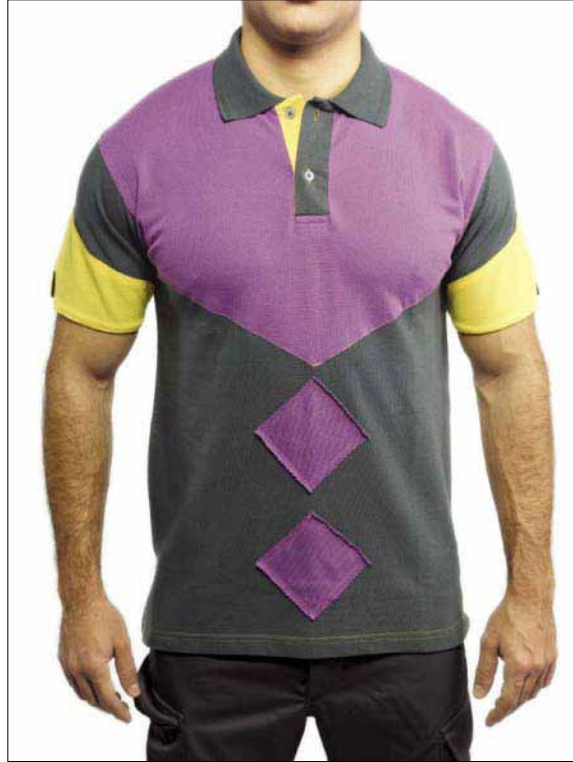
LW 614



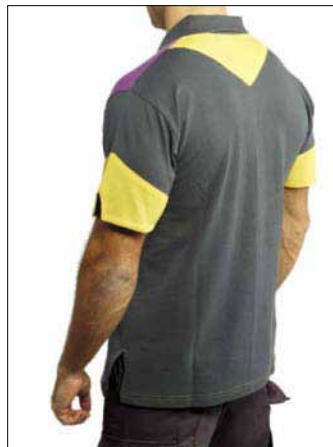
LW 615



LW 616



LW 617
Male Polo



“It’s about how you add that extra touch that makes the whole difference.”



A 1226

Apron

SIZES | All sizes

FABRIC | 50 / 50
poly / cotton

171

ACCESSORIES



A 1227**Apron**

SIZES | All sizes

FABRIC | 50 / 50

poly / cotton



A 1228

Apron

SIZES | All sizes

FABRIC | 50 / 50
poly / cotton



A 1229

Apron
SIZES | All sizes
FABRIC | 50 / 50
poly / cotton



A 1230

Apron
SIZES | All sizes
FABRIC | 50 / 50
poly / cotton



A 1231

Apron
SIZES | All sizes
FABRIC | 50 / 50
poly / cotton



A 1232

Apron
SIZES | All sizes
FABRIC | 50 / 50
poly / cotton



A 1233

Apron
SIZES | All sizes
FABRIC | 50 / 50
poly / cotton



A 1234

Apron
SIZES | All sizes
FABRIC | 50 / 50
poly / cotton



A 1235

Apron
SIZES | All sizes
FABRIC | 50 / 50
poly / cotton



A 1236

Apron
SIZES | All sizes
FABRIC | 50 / 50
poly / cotton



A 1237

Apron
SIZES | All sizes
FABRIC | 50 / 50
poly / cotton



A 1238

Apron
SIZES | All sizes
FABRIC | 50 / 50
poly / cotton



A 1239

Apron
SIZES | All sizes
FABRIC | 50 / 50
poly / cotton



A 1240

Apron
SIZES | All sizes
FABRIC | 50 / 50
poly / cotton



A 1241
Scarf
FABRIC | 100% polyester



A 1242
Scarf
FABRIC | 100% polyester



A 1243
Scarf
FABRIC | 100% polyester



A 1244
Scarf
FABRIC | 100% Silk

A 1245

Caps

Baseball cut

Six panels and five panels

Variety of colors

FABRIC | 100% cotton



Head Wear

A 1246



A 1249



A 1247



A 1250



A 1248



A 1251



A 1252



A 1253

Ties
FABRIC | 100% polyester



A 1254
Ties
FABRIC | 100% Silk





A 1256

Bowtie

FABRIC | 100% satin

A 1257

Cufflinks

Elasticated knots



A 1258
Leather Belts

*“How to make the best out
of your looks and convey the
right attitude.”*

Storage

To keep your uniforms in the best shape, follow the 10 simple steps below:

— All your employees should strictly follow the common hygiene rules of all employees before wearing their uniform.

— Even if the uniforms are not worn every day, make sure to brush them daily.

— The laundered uniforms should be stored in a well ventilated room or area.

— Don't use harsh chemicals when performing laundry routine cleaning and make sure the garment is perfectly pressed.

— Put creased uniforms in a humid environment. If not available, vaporize them lightly with water.

— Respect a distance of 1.5 inches when hanging garments and don't use too narrow or too wide hangers.

— Make sure your employee does not wear the same uniform two days in a row. Every employee should have at least three uniforms to ensure full rotation.

— Avoid rubbing a stain. Dub it gently instead.

— Store the uniform only after laundry.

— Make sure your staff does not wear the same uniform for too long.

Care instructions

Each garment comes with clear instructions. Make sure to strictly follow them if you wish your uniforms to stay as neat and fit as the day you received them.

Problem solving

When you face a specific problem, before doing any step, visit our help desk and find the solutions we offer.

Sizing information

Always order the size according to the largest measurement, for dresses, tunics, t-shirts and shirts select out of the following, bust, waist or hips and for skirts and trousers either the hips or waist.

Women's clothing

Jacket Shirt Blouse Fleece Trouser Short	8	10	12	14	16	18	20
Chest size in inches	32	34	36	38	40	42	44
Chest size in centimeters	81	86	91	97	102	107	112
Waist size in inches	22	24	26	28	30	32	34
Waist size in centimeters	56	61	66	71	76	81	86
French / Euro	XS/34	S/36	M/38	L/40	XL/42	XXL/44	XXXL/46

Men's clothing

Jacket Body-warmer Fleece Shirt	XS	S	M	L	XL	XXL	XXXL
Chest size in inches	36	38	40	42	44	46	48
Chest size in centimeters	92	97	102	107	112	117	122
Euro Conversions	46	48	50	52-54	56	58	60

Trouser shorts	XS	S	M	L	XL	XXL	XXXL				
Fixed waist size in inches	28	30	32	33	34	36	38	40	42	44	46
Fixed waist size in centimeters	71	76	81	84	86	91	97	102	107	112	117
Euro Conversions	42	44	46	48	50	52	54	56	58	60	62
French	36	38	40	42	44	46	48	50	52	54	56

Overtrouser Fully elasticated waist trouser	XS	S	M	L	XL	XXL	XXXL
To fit waist size in inches	28	30-32	33-35	36-38	39-41	42-44	45-47
To fit waist size in centimeters	71	76-81	84-89	91-97	99-104	107-112	114-119
Euro Conversions	42	44-46	48-50	52-54	56	58-60	6

Trouser leg length	SHORT	REGULAR	LONG
Length in inches	29	31	33

Juniors

Age	2	3-4	5-6	7-8	9+	11+	13	14	
Chest size in inches	20	22	24	26	28	30	32	34	36
Chest size in centimeters	51	56	61	66	71	76	81	86	91
Height in centimeters	86-92	98-104	110-116	122-128	134-40	146-152			
Waist size in inches	20	21	22	23	24	25	26	27	28
Waist size in centimeters	51	53	56	58	61	63	66	69	71
Euro conversions	92	104	116	128	140	152	164	176	188